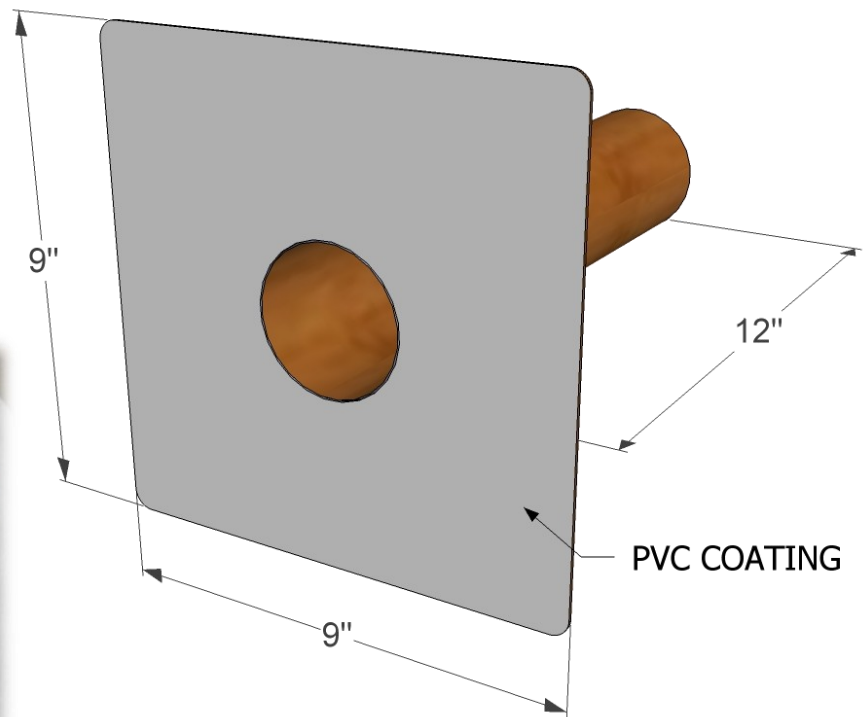
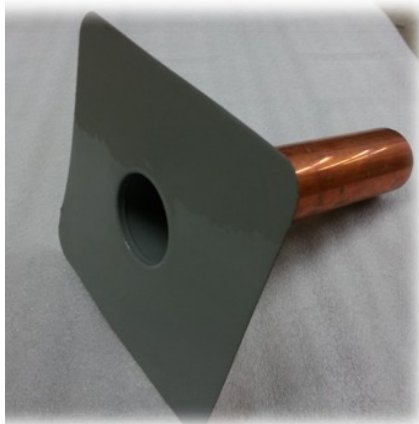


#ED-404  
OVERFLOW

# EURODEK PRODUCTS

## PVC COATED OVERFLOW DRAIN

Designed to be used in conjunction with the WDD1 Roof Deck Drains, PVC coated overflow drains provide back up protection for 'trap deck' applications. The weldable PVC coated flange ensures a permanent waterproof seal between the membrane and overflow drain.



**NOTES:**

- Copper flange and outlet pipe
- PVC coated flange for weldable membrane connection
- Flange can be easily modified to suite site requirements.

**DIMENSIONS:**

- Flange Height: 9" (225mm)
- Flange Width: 9" (225 mm)
- Pipe Length: 12" (300mm)
- Outlet Pipe: 2-3/4" (69mm) O.D.

For further information regarding Eurodek Products please contact:  
Eurodek Products - (250) 491-7271 - [www.eurodek.ca](http://www.eurodek.ca)